

# SCI<sup>®</sup>

## APPOINTMENT OF DIRECTOR OF STAKEHOLDER ENGAGEMENT

SOCIETY OF CHEMICAL INDUSTRY

UBOAB

2024



WHERE SCIENCE MEETS BUSINESS

# WELCOME FROM SHARON TODD, CEO

SCI was established as a charity in 1881 with a core charitable purpose to accelerate science out of the laboratory into industry for the benefit of society. Established in the UK by the industrialists of the last industrial revolution SCI has expanded over the years and now has members in over 70 countries and a global readership base for its well-known publications.

The Society, uniquely, supports a diverse multi-science and multi-disciplinary community, comprising scientists, inventors, entrepreneurs from start-ups and SMEs and senior business leaders from multi-national corporations. Their common interest is in collaborating to solve big societal issues through science and innovation. With over 60,000 scientists and industrialists in its network, including over 900 companies and 500 universities worldwide, SCI is the place *Where Science Meets Business*.

Recently a new strategy was agreed with the Board of Trustees. Holding true to our core purpose but set against the context of addressing the global challenges facing society today; scaling solutions to address net zero, ensuring health and wellbeing for a burgeoning population, tackling the complex issues of sustainability and building and supporting the next generation. These present real challenges that require many stakeholders to work together to provide practical, scalable and commercially viable solutions. Growth and expansion to deliver impact are at the heart of the strategy and the forward programme. In the coming years we are looking to continue to grow our membership, to build out our publishing portfolio and to continue to strengthen the finances of the Society.

SCI is now looking for a Director of Stakeholder Engagement to lead the membership and stakeholder activities. The role is responsible for growing the membership income, managing the high profile and expanding corporate partner network and managing the membership programmes and related activities for high impact. We are seeking an energetic and impactful individual who has a demonstrable track record of delivering income growth through establishing strong relationships with key stakeholders, who is commercially astute and who is keen to be in a role where they can take responsibility and have an impact. Building strong relationships, being credible with senior stakeholders and being a team player are crucial to delivery. The environment is challenging and stimulating, and the role will provide the individual with an opportunity to work within a professional and expert network to make a real difference.

WHERE SCIENCE MEETS BUSINESS

# ABOUT SCI<sup>®</sup>

## CHARITABLE PURPOSE

### Charity established by Royal Charter in 1881

Incorporated but unlimited liability.

### Charitable purpose

To promote links between chemistry-related sciences and industry for the benefit of the public.



## SOCIETY OF CHEMICAL INDUSTRY

### CREATION

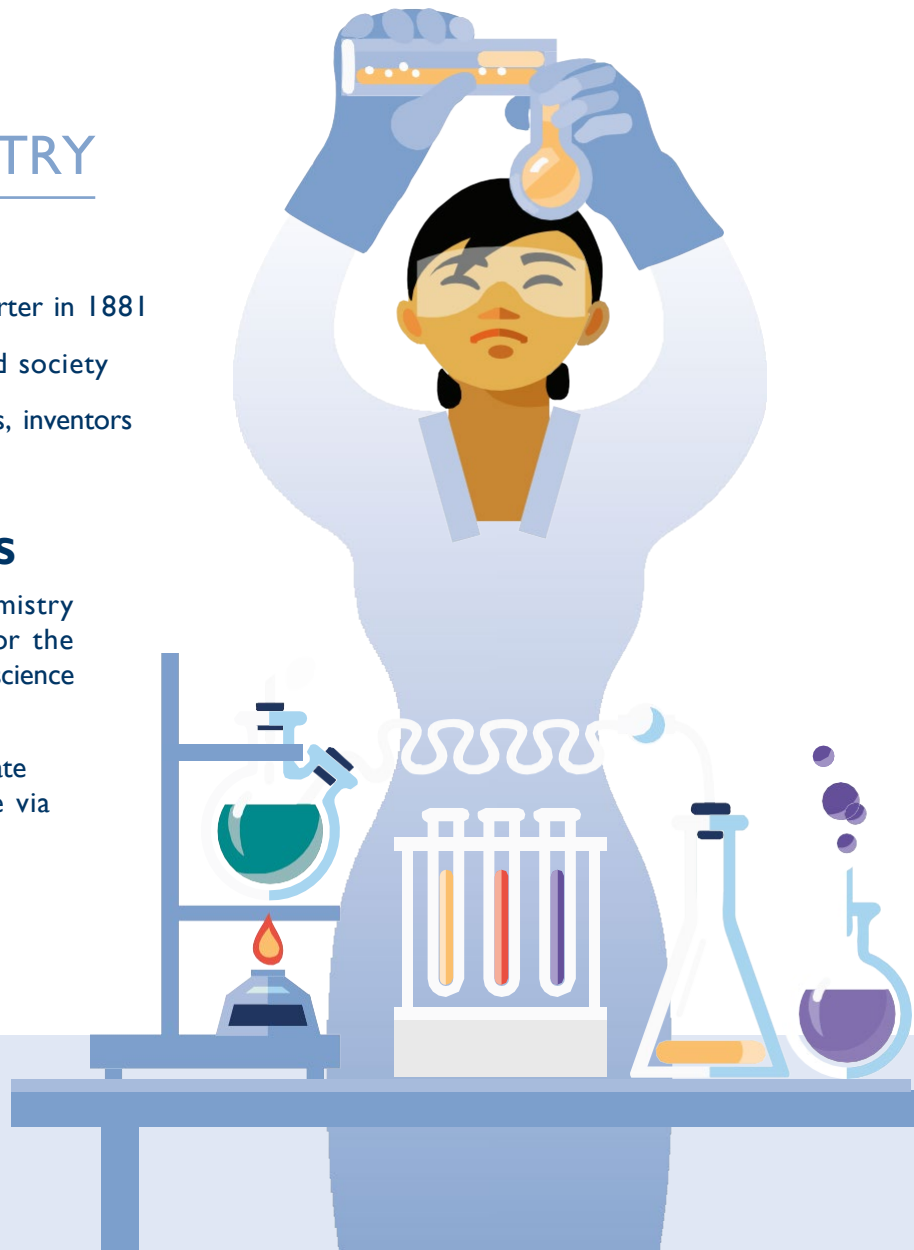
Charity established by Royal Charter in 1881

Unique multidisciplinary learned society

Founded by prominent scientists, inventors and entrepreneurs

### CHARITABLE OBJECTIVES

- To promote links between chemistry related sciences and industry for the benefit of the public 'where science meets business'
- To foster innovation and accelerate the commercialisation of science via new products and processes



WHERE SCIENCE MEETS BUSINESS

# MULTI-DISCIPLINARY OPEN INNOVATION COMMUNITY



SCI® (Society of Chemical Industry) is a global network of innovators, formed in 1881 by prominent scientists, inventors and entrepreneurs, who went on to form the products, processes and companies that propelled society forward.

We foster innovation and accelerate the commercialisation of science; *SCI® is the place where science meets business.*

BELGRAVE SQUARE

SOCIETY OF CHEMICAL INDUSTRY

COMMUNITY

> 60,000  
In the network  
> 600 Early  
career  
RESEARCHERS

> 900  
Companies

> 500  
Universities

INTERNATIONAL ORGANISATION WITH A GLOBAL NETWORK



PUBLICATIONS

~350 EXPERTS IN THEIR FIELD

8 PEER-REVIEWED JOURNALS



2.5M  
ARTICLE  
DOWNLOAD



CHEMISTRY & INDUSTRY MAGAZINE



CONFERENCES

Agrifood chain | Energy  
Environment | Materials Health & wellbeing



60  
EVENTS PA

SHOWCASING  
INNOVATION  
INTO INDUSTRY

WHERE SCIENCE MEETS BUSINESS

# KEY ACTIVITIES

## PROMOTING SCIENCE INNOVATION INTO INDUSTRY



### Translation of Knowledge

- Conferences
- Events
- Publications
- Committees



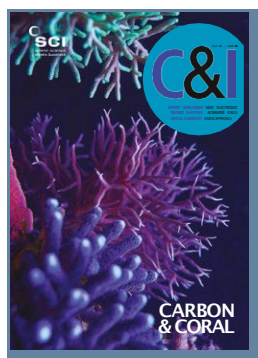
### Innovation Skills & Careers

- Mentoring
- Recruitment Days | Training
- Ambassadors
- SCIdea Entrepreneurs



### Innovation Policy & Strategy

- Policy
- Strategic
- Consultancy

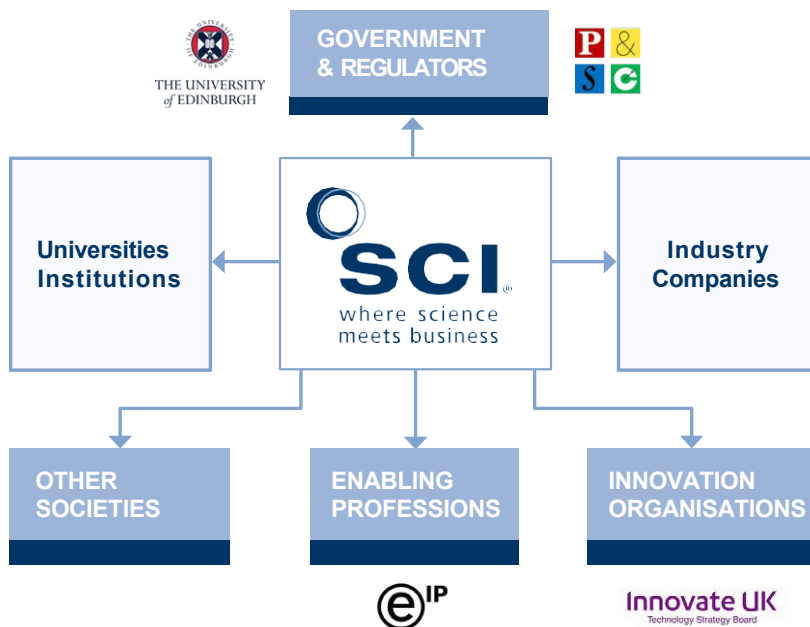


### Promoting Innovation & Industry

- Publications
- Social Media
- Public Lectures

WHERE SCIENCE MEETS BUSINESS

# KEY STAKEHOLDERS



## INDUSTRY COMPANIES

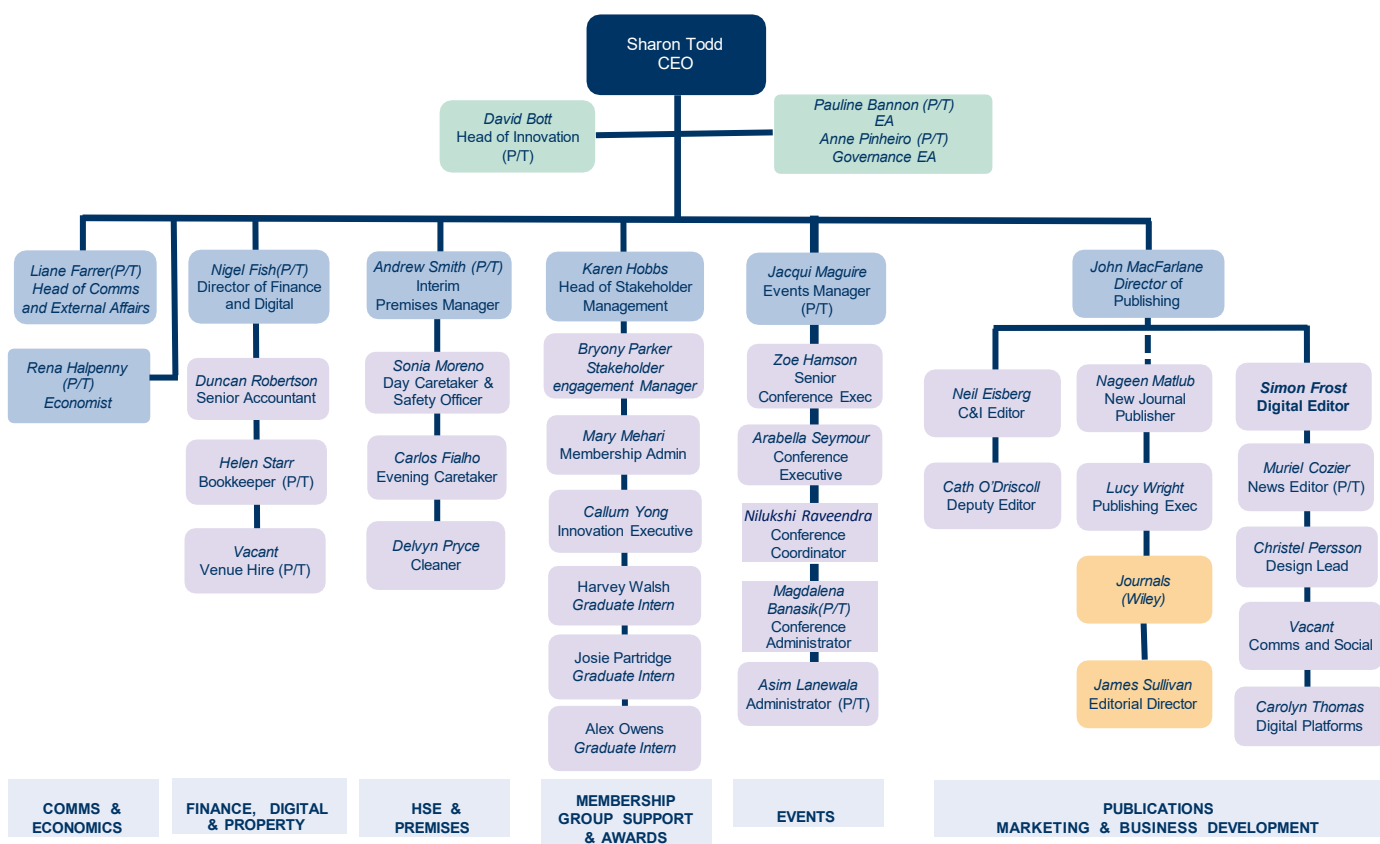


## UNIVERSITIES INSTITUTIONS



WHERE SCIENCE MEETS BUSINESS

# EXECUTIVE TEAM



Whilst the events team is currently separate, numbers of events are delivered out of this Directorate. It is likely therefore that events might move more formally into this team.

WHERE SCIENCE MEETS BUSINESS

# DIVERSITY POLICY

**SCI® highly values the differences that a diverse community brings and is fully committed to ensuring that it fosters and supports diversity throughout the organisation. SCI® will champion diversity through clear leadership, and a process of monitoring and review.**

## LEADERSHIP

The Board of Trustees and CEO will:

- Champion the case for diversity throughout SCI®.
- Develop and cascade a Diversity Vision Statement.
- Set appropriate diversity objectives.
- Provide senior-level ownership and sponsorship for the programme.

*Specifically, SCI® will:*

- ensure it is a place which values diversity, meritocracy, openness, fairness and transparency;
- seek to actively encourage more diversity in its governance, staff and all its committees;
- not discriminate because of age, disability, gender, race (which includes colour, nationality and ethnic or national origins), religion or belief;
- provide appropriate training as required.

All SCI® members and staff in responsible positions are responsible for the promotion and advancement of this Policy. Behaviour, actions or words that transgress the Policy will not be tolerated and will be dealt with in line with the organisation's disciplinary policy.

## REVIEW

The Policy will be reviewed on an ongoing basis to reflect changes in the law, demographics and internal business requirements. Progress relating to the Policy will be recorded annually and a report will be presented to the Board of Trustees each year.





# THE ROLE OF DIRECTOR OF STAKEHOLDER ENGAGEMENT

SCI is recruiting for the Director of Stakeholder Engagement, reporting to the CEO, with responsibility for the membership and innovation programmes. SCI has been growing over the last few years as the challenges of addressing sustainability, net zero and global health are becoming increasingly urgent and many companies and key stakeholders are looking to collaborate, build knowledge and skill their teams.

The role has responsibility for engaging and growing membership, including continuing to build the expanding corporate partner network, which includes large global blue-chip companies as well as SMEs. Responsibilities also include management of the team of six to deliver the range of membership programmes including the awards programme, careers programmes and the innovation programmes. The role sits on the Senior Management Team responsible for driving the strategy of the charity.

## KEY AREAS OF RESPONSIBILITY

- Growing membership and membership income.
- Management of the growing blue-chip Corporate Partners Network.
- Management of the SCI Awards Programme with awards across the range of early, mid, and senior levels.
- Management of the SCI Early Career programmes, including the College of Scholars and the SCIdeas Entrepreneurs Programme.
- Coordination of the Innovation Programmes (in collaboration with the CEO and Head of Innovation).
- Whilst the events team is currently separate, numbers of events are delivered out of this Directorate. It is likely therefore that events might move more formally into this team.

The role is diverse and presents an exciting opportunity for someone with experience of growing membership or income, who has worked in innovation or industry, and who is able to build strong relationships at a senior level to grow and collaborate with a community that is having a direct impact on society through advancing scientific innovation. Candidates will need to demonstrate a strong track record in growing income, relationship management and timely delivery of projects. Teamwork and effective management skills are required.

SCI welcomes diversity and encourages candidates from diverse backgrounds to apply for this role.

WHERE SCIENCE MEETS BUSINESS

# THE ROLE OF DIRECTOR OF STAKEHOLDER ENGAGEMENT

## WE ARE LOOKING FOR THE FOLLOWING SKILLS AND COMPETENCIES:

- Credible, able to project SCI's vision and mission at a senior level in partner organisations.
- Demonstrable experience of generating income and working to agreed financial targets.
- Energetic and able to engage proactively in the development and delivery of the strategy.
- Excellent leadership skills. Initiative-taking and positive, able to inspire the team.
- Able to multitask, manage own and team workload, and to meet deadlines.

## DESIRABLE:

- Experience in STEM or an area related to SCI activity.
- 10 - 15 years in a senior membership/customer or relationship management role

For an incumbent, the role provides a unique opportunity to build significant networks at senior levels across industry, academia, and government, as well as lead on developing new programmes for the charity. The community is broad covering scientific innovation across energy, agrifood, materials, sustainability, life sciences and consumer products so the range of organisations we deal with is very diverse.

The role could suit someone moving up in their career or someone with significant relevant experience looking to make an impact from their career experience in a charity.

WHERE SCIENCE MEETS BUSINESS

# TERMS OF APPOINTMENT

- Contract:** Fixed term with option for permanent
- Hours :** Full time 5 days per week
- Flexible:** Minimum 3 days in office (fixed days)
- Benefits:** 30 days holiday, life insurance, attractive pension
- Location:** Prime central London, SW1X

## HOW TO APPLY

Saxton Bampfylde Ltd is acting as an employment agency advisor to the Society of Chemical Industry on this appointment.

Candidates should apply for this role through our website at [www.saxbam.com/appointments](http://www.saxbam.com/appointments) using code **UBOAB2**.

Click on the 'apply' button and follow the instructions to upload a CV and cover letter and complete the online equal opportunities monitoring\* form.

Applications should be received not later than noon on Monday 7 October 2024.

\* The equal opportunities monitoring online form will not be shared with anyone involved in assessing your application. Please complete as part of the application process.

### **GDPR personal data notice**

According to GDPR guidelines, we are only able to process your Sensitive Personal Data (racial or ethnic origin, political opinions, religious or philosophical beliefs, trade union membership, genetic data, biometric data, health, sex life, or sexual orientation) with your express consent. You will be asked to complete a consent form when you apply and please do not include any Sensitive Personal Data within your CV (although this can be included in your covering letter if you wish to do so), remembering also not to include contact details for referees without their prior agreement.

SCI® is  
a global  
organisation -  
connecting  
science with  
business.



Society of Chemical Industry, 14/15 Belgrave Square, SW1X 8PS, London, UK  
T: +44 (0)20 7598 1500 E: [exec@soci.org](mailto:exec@soci.org) [www.soci.org](http://www.soci.org)

SCI® founded in London 1881 and in New York 1894 | Incorporated by Royal Charter 1907 | Registered as UK Charity 206883  
Recognised as a not for profit organisation across the world | SCI® is a trademark of Society of Chemical Industry